

04/04/2023

Activity during the quarter included selling the fund's investments in FedEx Corporation^[1] and Origin Energy Limited^[2]. We added to the investment in Qube Holdings Limited and re-established the option position shorting the Japanese Yen (vs the USD). The fund is 70% invested, compared to 78% on December 31st.

Meaningful positive contributors to returns over the quarter included STO SE, Asics Corp and Intel Corp.

We visited North America in March. Our focus was the fund's various investments in regulated electric utility businesses. This idea is long term in nature; we expect to invest around it for many years.

The fund has invested in 75 individual long equity investments since its inception on 15th April 2010, including the 16 investments currently held. The average holding period of an individual investment has been 771 days, the fund has held 6 investments for more than 2000 days. Of the 59 investments that have been realised, 12 were subject to takeovers or similar corporate activity. The annualised local currency IRR from the long investments has been 13.5%.

Please contact us if you would like to discuss our activities in detail.

Miles, Nigel & Toby

^[1] The fund held an investment in FedEx Corporation from September 2022 until March 2023. It realised an annualised IRR of 99.4% and contributed 1.1% to returns.

^[2] The fund held an investment in Origin Energy Limited from October 2021 until March 2023. It realised an annualised IRR of 69.2% and contributed 1.9% to returns

The fund is the primary vehicle for the investment of our capital. Its current traits are:

- Highly stock specific investments that are concentrated in our few key ideas;
- The key ideas generally relate to companies that are not well known or popular investments;
- The fund currently has a significant USD and Euro exposure as a result of individual equity investments in these geographies;
- Managed with consideration of tax for Australian investors.
- A meaningful short exposure to the Yen.

Returns (to 31/03/2023)	Fund
Since inception* (annualised)	9.6%
Since inception* (cumulative)	227.5%
Rolling 5 year (annualised)	9.0%
Rolling 3 year (annualised)	20.1%
Rolling 1 year	27.8%
Standard deviation	10.5%

	2010	2011	2012	2013	2014	2015	2016	2017	2018	2019	2020	2021	2022	2023
July		1.14%	-1.95%	-3.06%	2.03%	1.98%	0.45%	-1.62%	-1.57%	4.99%	-0.35%	-0.86%	0.12%	0.37%
Aug		-0.33%	-0.32%	0.45%	1.42%	-0.39%	-1.39%	-0.18%	1.21%	1.50%	-1.64%	2.97%	-0.37%	0.84%
Sept		0.60%	-2.18%	1.89%	0.52%	4.18%	-1.19%	1.34%	3.04%	-4.26%	1.23%	-0.66%	0.69%	-5.65%
Oct		2.12%	0.83%	1.30%	1.43%	2.53%	0.27%	-0.21%	0.56%	-1.60%	0.51%	1.69%	-0.43%	9.22%
Nov		0.47%	-1.22%	-2.46%	3.97%	11.10%	0.60%	4.50%	2.73%	-0.54%	1.36%	7.61%	0.92%	5.36%
Dec		-0.24%	0.27%	6.93%	1.13%	3.00%	-3.07%	2.46%	0.06%	-3.05%	-0.02%	1.99%	1.54%	-0.28%
Jan		0.31%	0.84%	9.92%	-0.54%	0.97%	-1.77%	-5.16%	1.32%	2.20%	1.93%	2.82%	1.66%	0.14%
Feb		1.78%	0.02%	2.69%	-0.81%	1.57%	1.77%	-0.59%	-1.66%	3.91%	-7.52%	1.72%	-5.44%	1.84%
Mar		1.06%	5.59%	-0.44%	-1.45%	-0.04%	-0.84%	1.21%	-0.52%	0.53%	-9.67%	4.36%	1.41%	1.92%
Apr	*0.04%	-1.94%	1.62%	4.45%	0.08%	0.32%	1.72%	1.34%	1.27%	2.11%	0.43%	0.44%	16.01%	
May	-0.78%	1.01%	-0.37%	8.63%	1.29%	0.47%	4.12%	1.84%	-0.23%	-3.64%	4.11%	3.85%	-0.85%	
Jun	-0.76%	-0.70%	-2.58%	1.68%	0.02%	-2.61%	-0.79%	0.37%	-1.21%	1.56%	0.05%	0.66%	-2.43%	
FY	-1.49%	5.33%	0.29%	36.06%	9.33%	24.95%	-0.31%	5.10%	4.97%	3.28%	-9.97%	29.71%	12.10%	
CY		-3.10%	10.12%	43.95%	22.40%	-3.70%	10.76%	4.89%	-4.23%	7.82%	0.82%	17.44%	19.87%	

* Inception date: 15/04/2010. Past Performance is not a reliable indicator of future performance and no guarantee of future returns is implied.

The fund's daily unit price and distribution details can be downloaded via this [link](#).

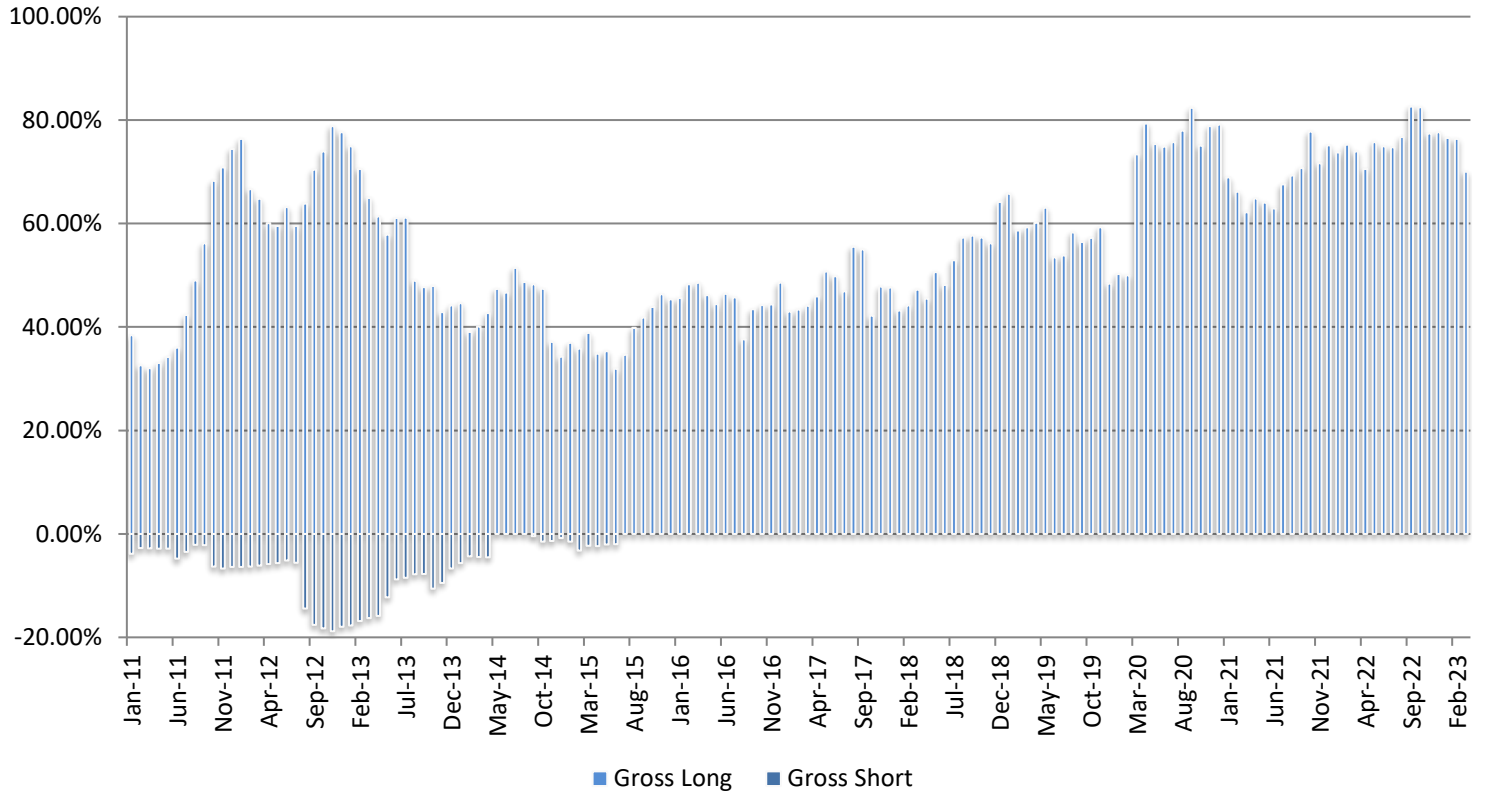
	Australia / NZ		USA		UK/Europe		Japan		Total	
	%	no/.	%	no/.	%	no/.	%	no/.	%	no/.
Tenet - Electric Utilities (US)			21	5					21	5
Eurokai					11	1			11	1
STO SE					8	1			8	1
Ponsse OYJ					6	1			6	1
Qube Holdings Ltd	5	1							5	1
Rotork Plc					4	1			4	1
Nihon Kohden Corp							3	1	3	1
Tower Limited	3	1							3	1
Intel Corp			3	1					3	1
Ferguson Plc			2	1					2	1
Asics Corp							2	1	2	1
Topps Tiles					2	1			2	1
Gross long	8	2	26	7	31	5	5	2	70	16
Gross short										
Gross invested position	8	2	26	7	31	5	5	2	70	16
Derivatives (annual cost)									3	3

Notes: Totals may not add due to rounding. Data as at 31st March 2023

	Long (%)	Short (%)	Currency (%)
Australia	5	0	46
United States *	26	0	21
UK/Europe*	31	0	25
Japan	5	0	5
New Zealand	3	0	3
Total	70	0	100
Derivatives (annual cost)	3		

Notes: Data as at 31st March 2023. * UK/Euro & USD approximate only.

Fund Investment position 2011 - 2023



Terms and conditions

This document is only made available to wholesale clients as that term is used in sections 761G and 761GA of the Corporations Act 2001 (Cth).

Long Tail Asset Management Pty Limited holds an AFS Licence (number 341474). The information provided in this document is only intended to describe the activities of the Fund to existing and prospective investors. As such the information is generic in its nature and does not and cannot take into account an investor's objectives, financial position or needs. Investors should rely upon their own enquiries and analysis as to the merits and risks in deciding whether to make any investment and seek appropriate advice as necessary prior to making any investment decision. The document contains general financial product advice only.

You should understand that any forecasts or opinions in this document regarding the direction or prospects of any investment or market are based on a number of assumptions and may not be realised. Such forecasts or assumptions may change from time to time without notice to you.

Long Tail Asset Management Pty Limited has taken all reasonable care and believes that the information in this document is correct and accurate but no warranty or assurance is made with respect to its completeness, currency or accuracy, and neither Long Tail Asset Management Pty Limited nor its related bodies corporate, agents, Directors, officers, employees or advisers are, to the extent permitted by law, responsible for loss or damage suffered as a result of reliance by any investor or prospective investor on any statements, opinions or data contained in this document.

Copyright on the information in this document is owned by Long Tail Asset Management Pty Limited. You may use and copy the information for your personal use only. Long Tail Asset Management Pty Limited expressly prohibits the reproduction, transmission, or distribution of this information for any other purpose without the written permission of Long Tail Asset Management Pty Limited.

Investors should be aware of the risks of investing in products offered by Long Tail Asset Management Pty Limited. Prior to investing in a Fund operated by us you should read the Information Memorandum carefully and fully understand the risk factors.

Long Tail Asset Management Pty Limited does not guarantee or assure the return of all or any capital invested, nor the performance or profitability of its Fund. Investors should be aware that past performance of the Fund is not indicative of the performance which may be achieved in the future and is not a reliable indicator of future performance. No representation is made that profits will be achieved on behalf of the Fund or losses will be avoided in the future.

To the maximum extent permitted by law, the information and opinions contained in this document are provided without any warranty of any kind. Long Tail Asset Management Pty Limited and its associates expressly disclaim all liability for any loss or damage of any kind (including direct, indirect, special and consequential loss and damage of business revenue, loss of profits, loss or corruption of data, failure to realise expected profits or savings or other commercial or economic loss of any kind), whether reasonably foreseeable or not, incurred or suffered by any person arising out of or in any way related to this document.

ABN 34 136 795 170 | AFSL 341 474

PO Box R 1777, Royal Exchange Sydney NSW 1225

Ph (+ 612) 8241 – 1000 | www.longtailasset.com